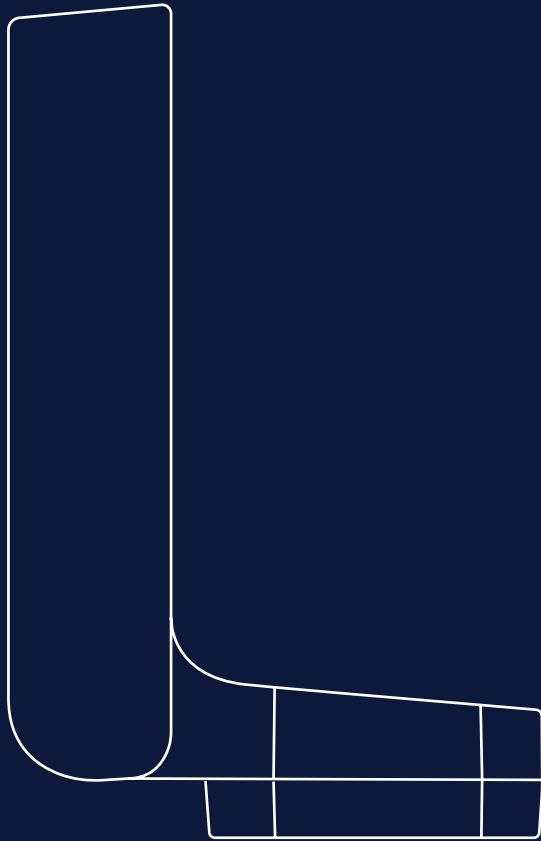



Bottle Cage Adapter



 switch

00

Table of Contents

01 About p.3

02 Installation p.5

1. About the Bottle Cage Adapter

The Swytch Bottle Cage Adapter enables you to install your Swytch Kit on your frame in place of a bottle cage, creating additional space on your handlebars.



Included in this box:

Main group (pre-assembled)	Qty
Base plate	1
L-bracket	1
M5 flat washer	2
M5x20mm cap head bolt	2
M5x20mm countersunk head bolt	2

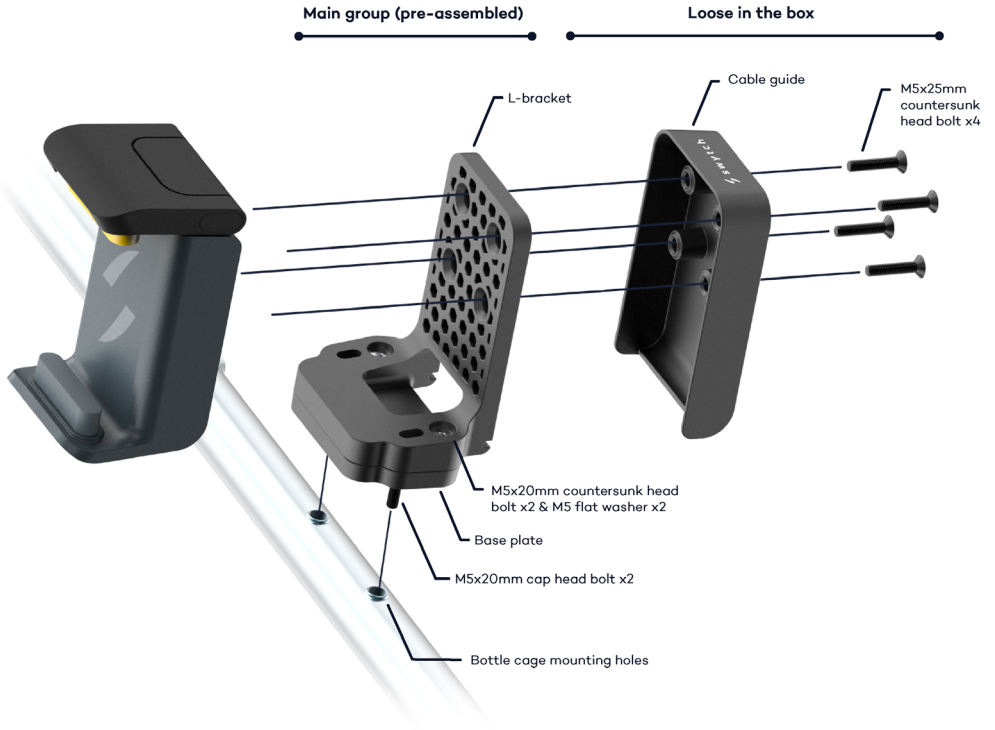
Loose in the box	Qty
Cable guide	1
M5x25mm countersunk head bolt	4
Motor extension cable	1
Display extension cable	3

You will need:

- 3mm Allen key
- Cable ties
- Scissors

2. Exploded View

2.1 Please refer to the Bottle Cage Adapter installation graphic below to identify items on the parts list, and for guidance during assembly.



2. Installation

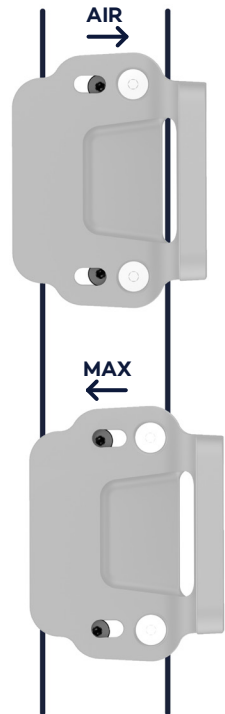
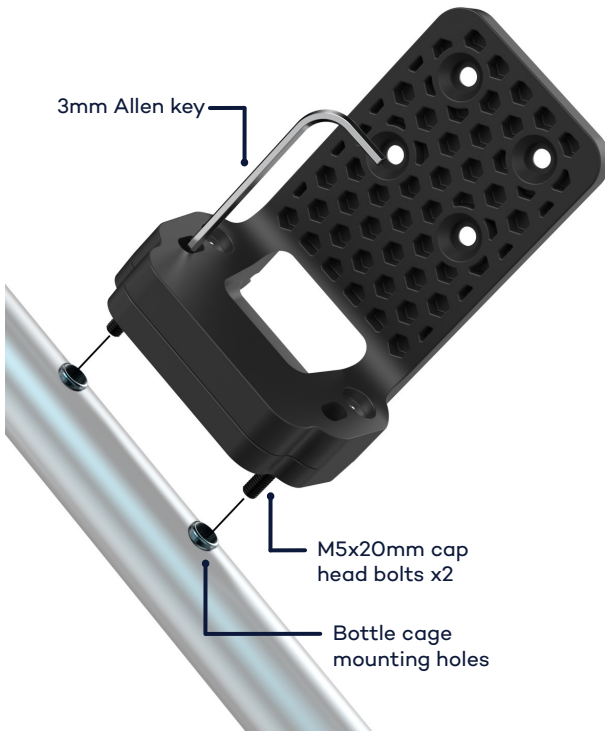
1. Screw the Bottle Cage Adapter main group on to your bike

- 1.1 The Bottle Cage Adapter main group can be simply screwed to your bike using the 3mm Allen key and the pre-assembled bolts in the slots.

Note

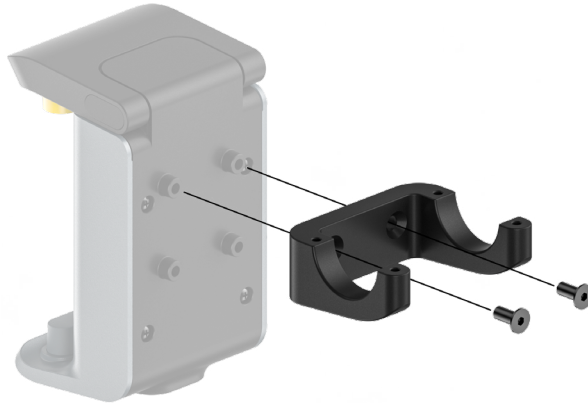
Tighten to 2-3 Nm of torque.
Visit swytchbike.com/manual/3nm/ for support.

For an AIR Power Pack, screw the bolts closer within the slot to the L- bracket bend. For MAX Power Packs, screw the bolts further from the L-bracket bend for better weight balance. If using both AIR and MAX, go with MAX positioning.



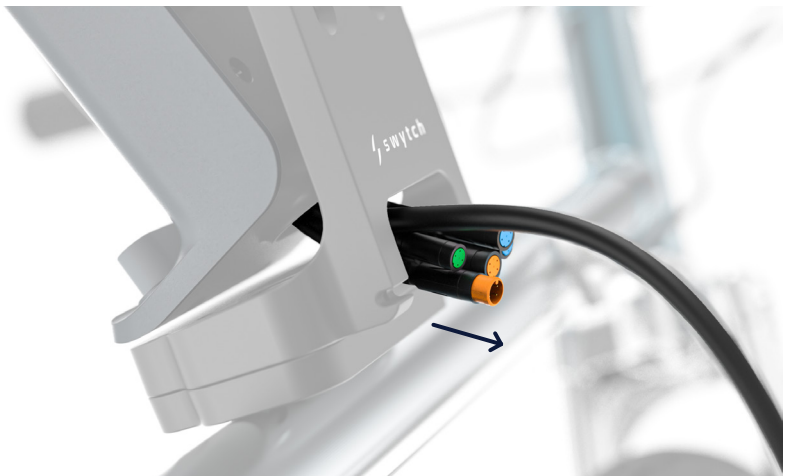
2. Remove the bracket from the mount

- 2.1 Using the 3mm Allen key, remove the bracket from the mount.



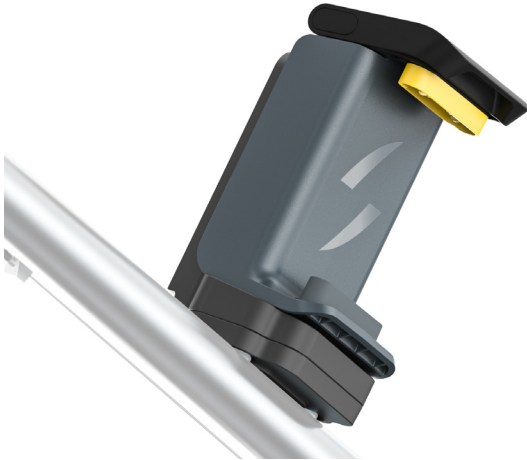
3. Guide the mount cables through the hole in the adapter

- 3.1 Guide all the cables coming out of the mount through the hole in the adapter, as shown.



4. Fit the mount into the adapter

- 4.1 Fit the mount into the bend of the adapter, it should be a tight fit.

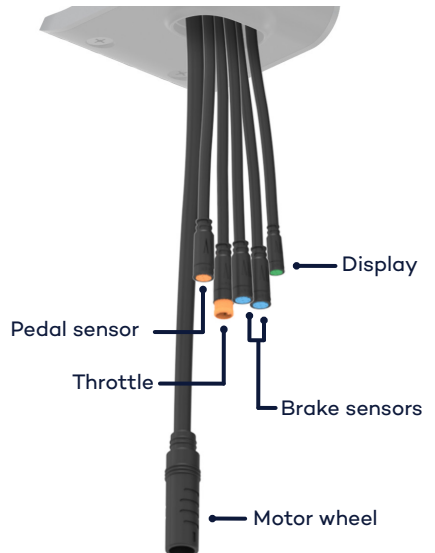


5. Determine which cables you require for your bike setup

- 5.1 Determine which cables you require and don't require for your Swytch bike.

The standard kit requires the following cables:

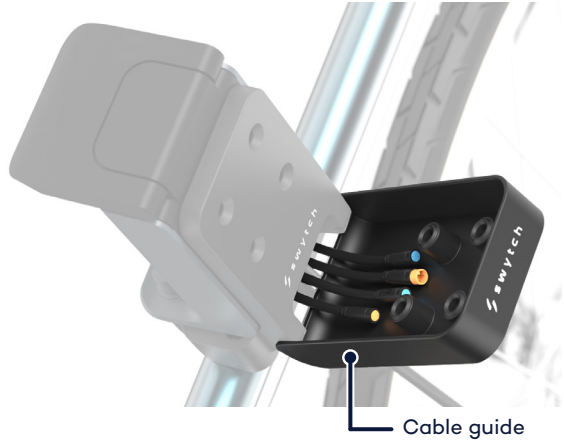
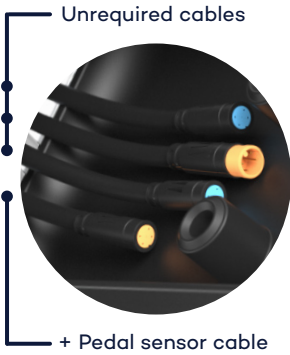
- Pedal sensor
- Motor wheel
- Display



6. Tuck the unrequired cables and the pedal sensor inside the cable guide like shown

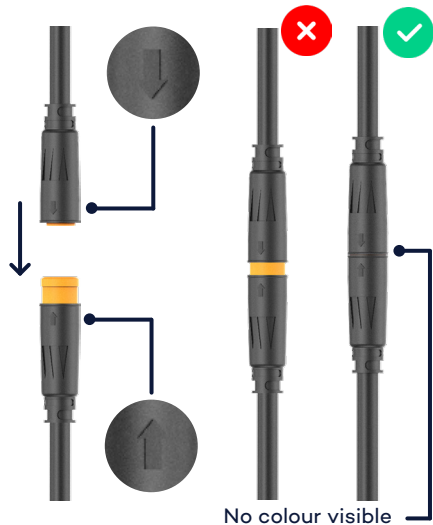
6.1 Tuck any unrequired cables into the cable guide. In our example we won't need the brake sensors or throttle cable so they are tucked inside as shown.

6.2 Tuck the pedal sensor cable into the guide as well. We will need to shorten it by wrapping it inside the cable guide in a later step.



7. Connect the pedal sensor to the mount inside the cable guide

7.1 The cable connectors are colour coded. The tall end of the connector connects with the short end. Align the arrows and push together until both arrows are touching.



8. Loop twice round the pedal sensor in the cable guide

- 8.1 Feed the pedal sensor cable up the side of the cable guide.
- 8.2 Loop the pedal sensor cable twice around the bosses to shorten it.
- 8.3 Exit the pedal sensor out the bottom hole in the adapter.
- 8.4 Install the pedal sensor following the main instruction manual steps.

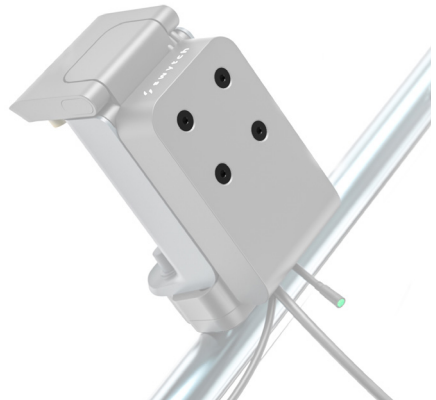
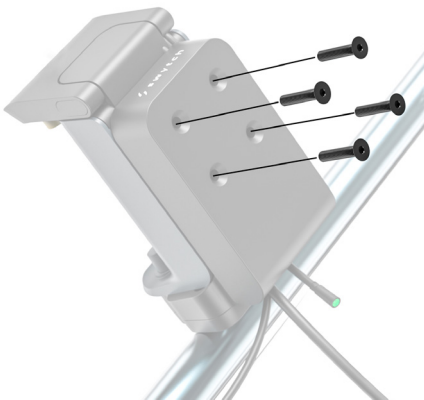


9. Secure the cable guide in place

- 9.1 Using the 3mm Allen key, sciew the cable guide on to the L-bracket with the four M5x25mm countersunk head bolts.

Note

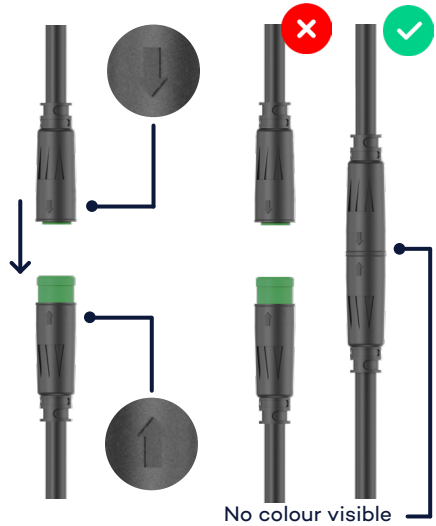
Tighten to 2-3 Nm of torque.
Visit swytchbike.com/manual/3nm/ for support.



10. Connect up the three display extension cables

10.1 Connect together the three display extension cables provided. This allows you to have your display mounted on your handlebars.

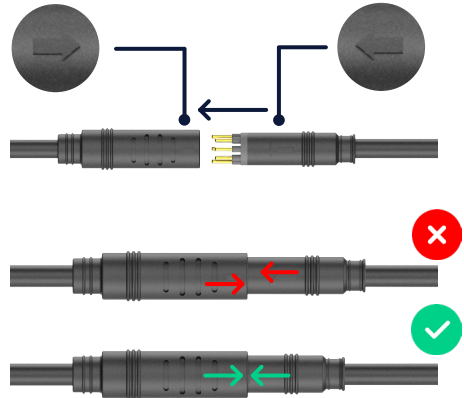
The cable connectors are colour coded. The tall end of the connector connects with the short end. Align the arrows and push together until both arrows are touching.



11. Connect up the motor extension cable

11.1 Connect together the motor extension cable provided.

The tall end of the connector connects with the short end. Align the arrows and push together until both arrows are touching.



12. Connect up

- 12.1 Connect up all the remaining cables to the parts of the Kit following your bikes cable routing.
- 12.2 Secure the cables to the frame using the cable ties and cut the ends using scissors.



Check your brakes and steering still function as normal. Do not cable tie your brakes down.



 s w y t c h