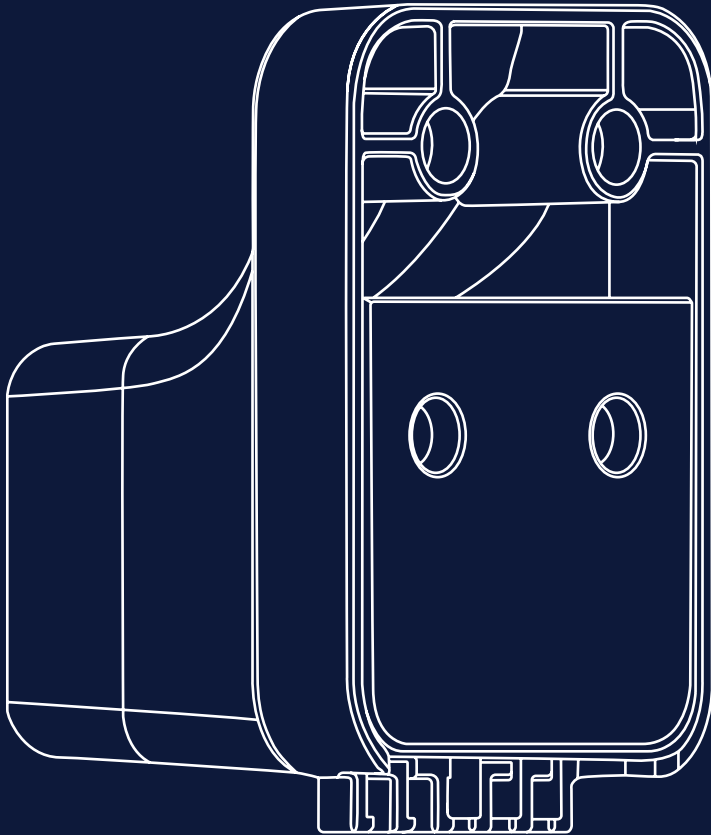


Bro Block



 switch

00

Table of Contents

01 About p.3

02 Installation p.5

1. About the Bro Block

The Swytch luggage block accessory allows the Swytch Kit to be mounted on the front luggage mounting point on many folding bikes, including Bromptons.

The Bro Block leaves your handlebars free, so handlebar-mounted accessories, such as a bag, can still be fitted. Some folding bikes can be a bit trickier to fit the conventional handlebar bracket to - in these instances, the Bro Block provides a clean and elegant solution.

Included in this box:

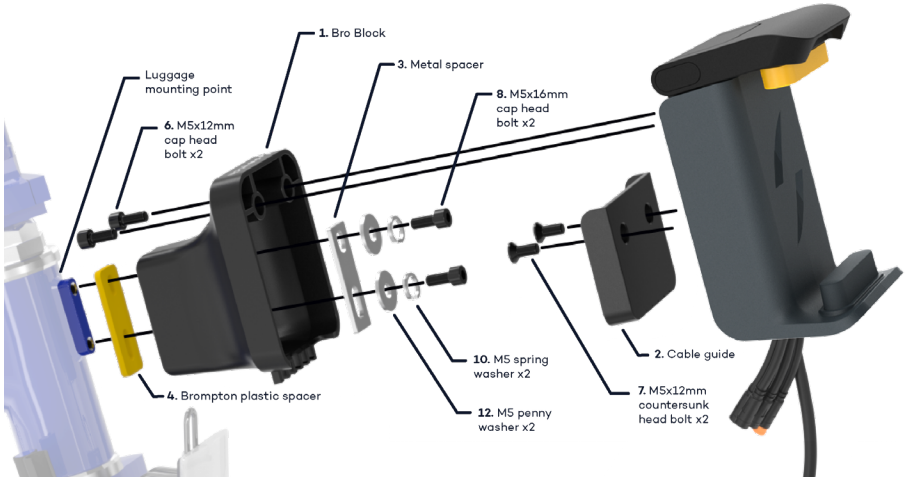
Part No	Part Name	Which Bike	Description	Quantity
1	Bro Block	All	Attaches your mount to your bike.	1
2	Cable guide	All	Organises and hides your unused cables and shortens the length of the motor cable.	1
3	Metal spacer	All	Provides a locking point for the washers.	1
4	Brompton plastic spacer	Bromptons only	Fills in the gap between the Bro Block and the mounting point on your bike.	1
5	Cable ties	All	Secures cables under the Bro Block.	10
6	M5x12mm cap head bolt	All	Secures the mount to the Bro Block.	2
7	M5x12mm countersunk head bolt	All	Secures the Cable guide to the mount.	2
8	M5x16mm cap head bolt	Bromptons only	Secures the Bro Block to the mounting point on your bike.	2
9	M6x16mm cap head bolt	Dahon/Tern/ Other Bikes	Secures the Bro Block to the mounting point on your bike.	2
10	M5 spring washer	Bromptons Only	Prevents the M5x16mm bolt from loosening.	2
11	M6 spring washer	Dahon/Tern/ & other bikes	Prevents the M6x16mm bolt from loosening.	2
12	M5 penny washer	Bromptons Only	Prevents the M5x16mm bolt from loosening.	2
13	M6 penny washer	Dahon/Tern/ & other bikes	Prevents the M6x16mm bolt from loosening.	2
14	Display Extension Cables	All	For extending the length of your display cable.	2

You will need:

- 5mm Allen key
- 3mm Allen key
- 4mm Allen key
- Scissors
- Cross-head screwdriver
- Adjustable spanner or 8mm spanner

2. Exploded View

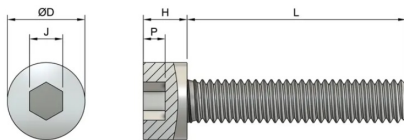
2.1 Please refer to the Brompton bike installation graphic below to identify items on the parts list, and for guidance during assembly.



3. Screw Information

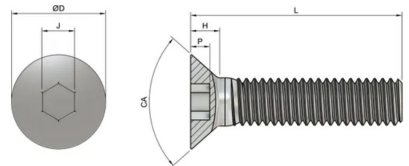
3.1 Please refer to the graphics below to help identify screws on the parts list, and for guidance during assembly. All the screws required are included.

M5x12mm cap head bolt



Head length [max] (H)	5mm
Head diameter (max) (D)	8.5mm
Length (L)	12mm
Socket size (J)	4mm
Hexagon depth (P)	2.5mm

M5x12mm countersunk head bolt



Countersunk angle (CA)	90 degrees
Countersunk length (max) (H)	3.1mm
Head diameter (max) (D)	11.2mm
Socket size (J)	3mm
Hexagon depth (P)	1.9mm
Length (L)	12mm

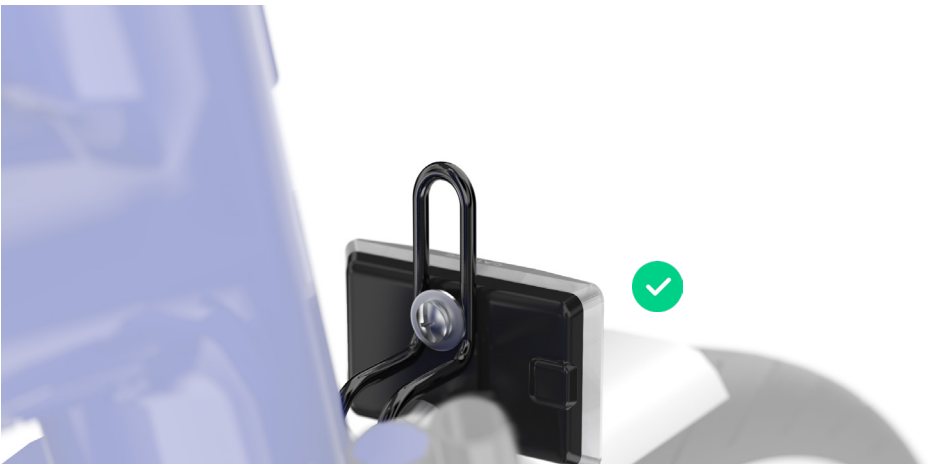
2. Installation

1. Lower your front reflector (**Brompton bikes only**)

- 1.1 To lower your front reflector, use either an adjustable spanner, 8mm spanner or cross-head screwdriver. Loosen the screw slightly and then slide the reflector down to its lowest position.



- 1.2 Align the reflector and then retighten the screw to secure it in place.

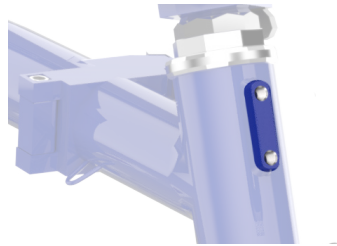


2. Prepare your luggage mounting point **(ALL bikes, including Bromptons)**

- 2.1 Remove any hardware fastened to your folding bike, such as a luggage carrier. Also remove any grub screws.



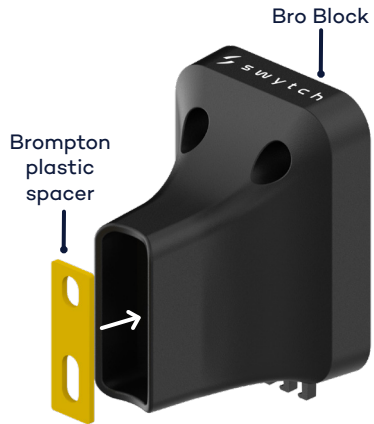
Installation not recommended if your luggage mounting point holes are rusted or dented.



3. Align the Brompton spacer inside the Bro Block **(Brompton bikes only)**

- 3.1 Line up and position the yellow Brompton plastic spacer inside the Bro Block.

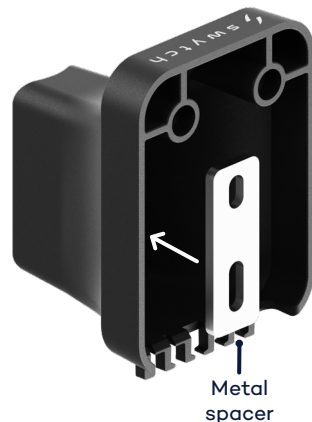
Orientate the spacer so the smaller hole on the spacer is at the top.



4. Line up the metal spacer inside the Bro Block **(ALL bikes including Bromptons)**

- 4.1 Line up and position the metal spacer inside the Bro Block as shown.

Orientate the spacer so the smaller hole on the spacer is at the top.



5. Attach the Bro Block to the luggage mounting point

5.1 For Brompton bikes:

Using a 4mm Allen key tightly screw the Bro Block on to the luggage mounting point using two M5x16mm cap head bolts (longest bolts supplied that fit a 4mm Allen key), M5 penny washer (small one) and the M5 spring washer (small one).

Note

Start by screwing both bolts in half way, then align the block and tighten fully.

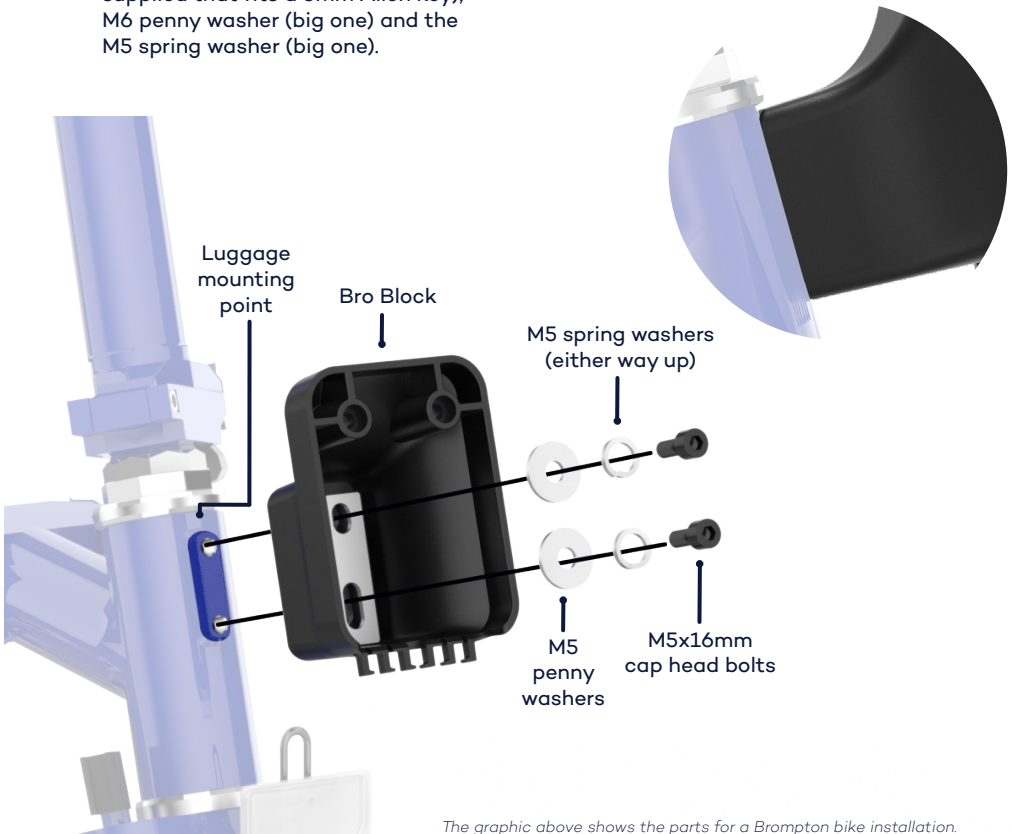
Tighten to 4 Nm of torque.
Visit swytchbike.com/manual/4nm/ for support.

For Dahon/Tern/ & other bikes:

Using a 5mm Allen key tightly screw the Bro Block on to the luggage mounting point using two M6x16mm cap head bolts (the only two bolts supplied that fits a 5mm Allen key), M6 penny washer (big one) and the M5 spring washer (big one).



There shouldn't be a visible gap between the downtube and the Bro Block.



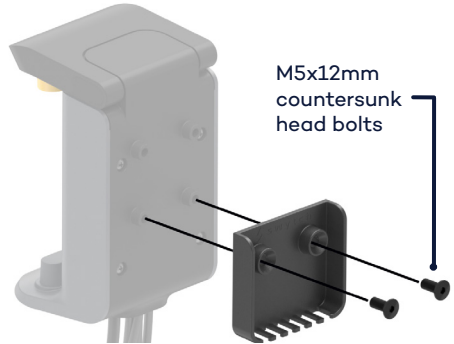
The graphic above shows the parts for a Brompton bike installation.

6. Screw the cable guide to the back of the mount

- 6.1 Using a 3mm Allen key, secure the cable guide to the bottom set of screw holes on the mount using two M5x12mm countersunk head bolts. Tighten with the small side of the Allen key to get a tight fit.

Note

Tighten to 2-3 Nm of torque. Visit swytchbike.com/manual/3nm/ for support.



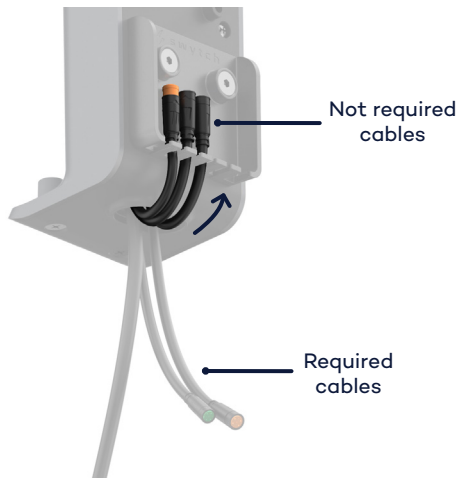
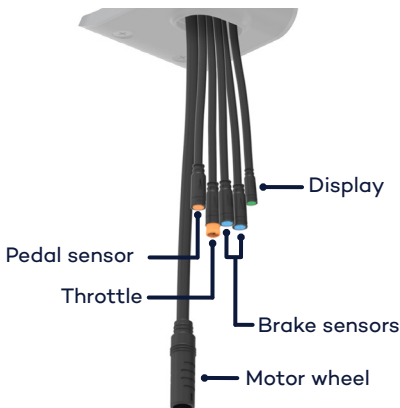
7. Guide up unused cables

- 7.1 Determine which cables you require and don't require for your Swytch bike.

The standard kit requires the following cables:

- Pedal sensor
- Motor wheel
- Display

- 7.1 Pass the cables not required through the **middle slots** of the cable guide, leaving the left and right slots empty for the motor cable in the next step.



8. Slot and loop in the motor wheel cable

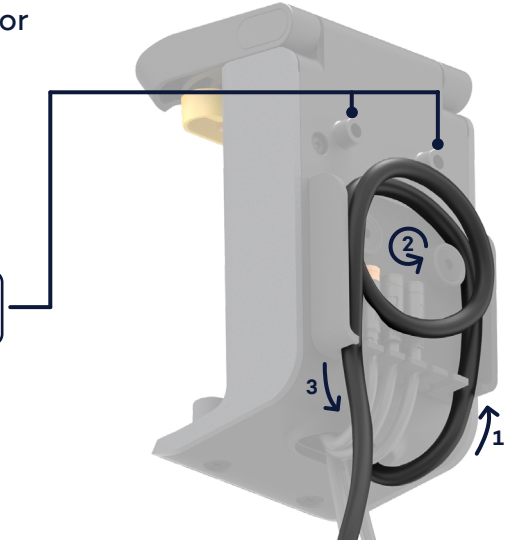
- 8.1 Feed the motor wheel cable up and into the **larger right hand slot** of the cable guide. **Loop the cable** to shorten it and let it exit through the **left hand slot**.



The loop should not block the top two bosses on the mount.

Note

It's fine if the cables push out from the cable guide as these will be hidden inside the Bro Block.



9. Fix the mount onto the Bro Block

- 9.1 Fit the mount into the front face of the Bro Block. The two free top mount bosses should fit snugly into the two holes in the Bro Block.



- 9.2 Screw the two M5x12mm cap head bolts through the rear of the Bro Block using the 4mm Allen key, attaching everything together. Use the small end of an Allen key to get a tight fit.

Note

Tighten the screws to 4 Nm of torque. Visit swytchbike.com/manual/4nm/ for support.

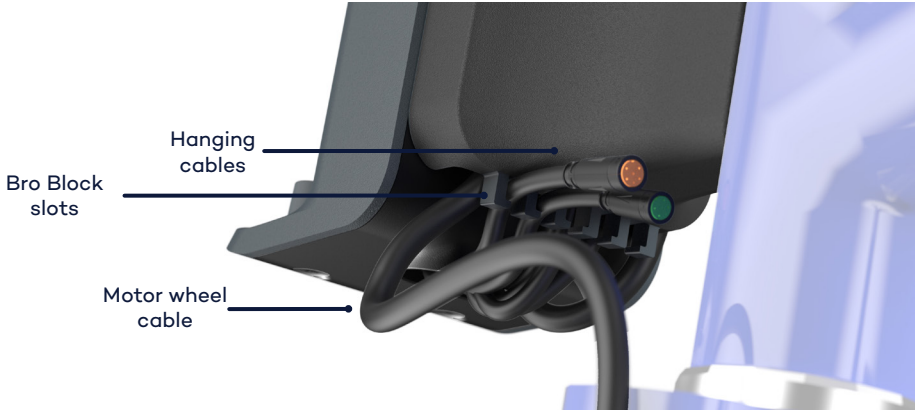


10. Fix the hanging cables

- 10.1 Pass any cable slack into the slots under the Bro Block to avoid clashes with the reflector. Reposition other cables if necessary.

Note

Complete step 13 if you cannot do this due to your cables being too short.



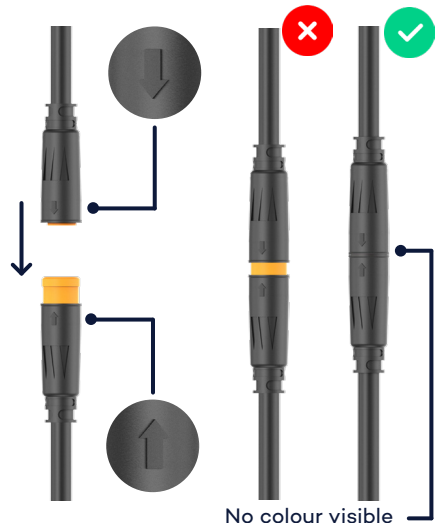
11. Connect up the cables adding in two display extension cables

Connect up all the cables you determined you require for your bike in step 7 assuming you have installed those parts previously. The cable connectors are colour coded. The tall end of the connector connects with the short end. Align the arrows and push together until both arrows are touching.

The two display cable extensions allow enough slack for the bike handlebars to fold on most folding bikes.

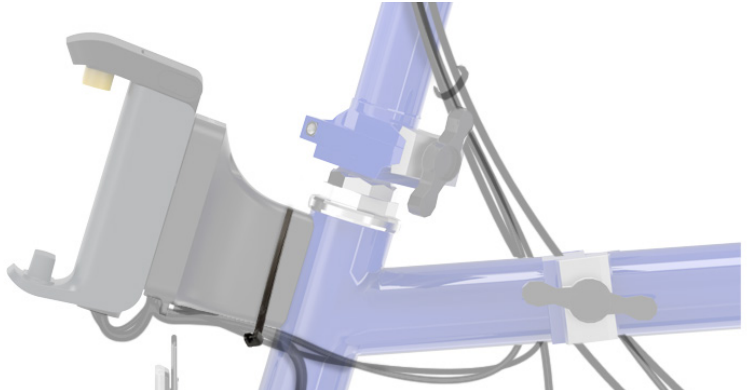
Note

If you have additional accessories you may need to purchase extra extension cables, depending on your bike.



12. Cable tie the hanging mount cables around the Bro Block

- 12.1 Secure the cables to the back of the Bro Block to stop them dangling.

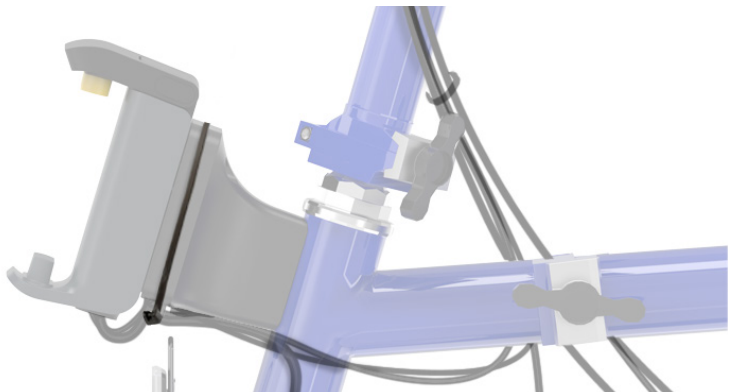


13. If necessary, cable tie the hanging mount cables around the front of the Bro Block

- 13.1 If your cables are still hanging down or didn't fit into the slots under the Bro Block (step 10), cable tie these around the Bro Block like shown.

Note

This step is only necessary for Bromptons with reflectors.



13. Route and secure your cables

- 13.1 When routing cables to the Bro Block, follow the existing cable routing of your bike.

Allow some slack for turning of the handlebars and to allow the bike to still fold as usual.

- 13.2 Loop any extra length of cable back on itself.

- 13.3 Using the cable ties provided, secure everything to your bike.



Make sure the cables aren't in the way when pedaling.



14. Test your bike

- 14.1 Unfold your bike and rotate the handlebars back and forth, to check they move freely. If they don't, adjust your cables and cable tie them again until there is no interference.



There should be no cables hanging down and hitting the reflector or wheel.

 s w y t c h